

# Ball Transfer Unit A820-76-13

Ball Units Series A8 - Wheel S/820



-30 °C - +70 °C

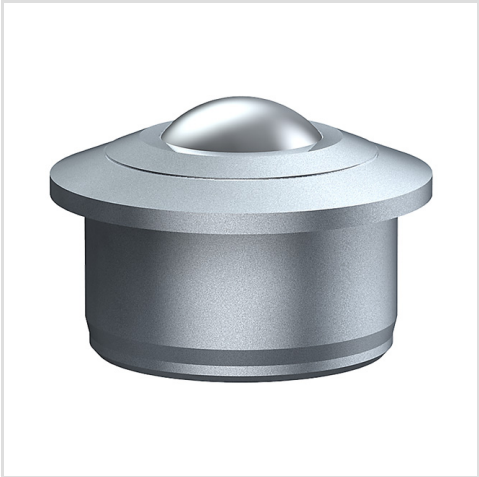
swivels easily

wear resistant

shock proof

floor protective

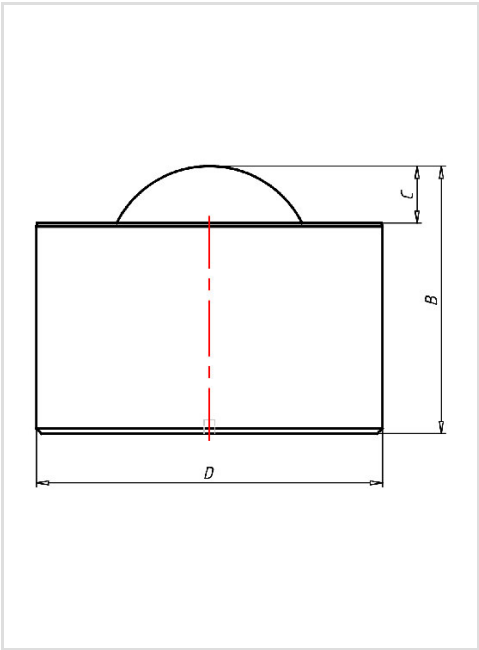
weather proof



Wheel

Ball: zinc-plated  
Housing, zinc-plated

Ball Transfer Unit	
Series:	820
Ball-Ø mm:	76
Finish housing:	steel zinc plated
Finish Balls:	carbon-steel
Load Capacity kg:	3000
Load capacity tested according to EN 12530 and EN 12527	
A mm:	-
B mm:	103
C mm:	23
D mm:	130
E mm:	-
F mm:	-
L mm:	-



Advantages

- ✔ Casing made of solid steel on the lathe
- ✔ High load capacity
- ✔ Low profile
- ✔ Can be disassembled for cleaning
- ✔ Fixing holes on request

©Copyright 2024 Rollenbau GmbH, [www.rollenbau.at](http://www.rollenbau.at) 28.04.2024

Applications

- Haulage way
- Assembly lines